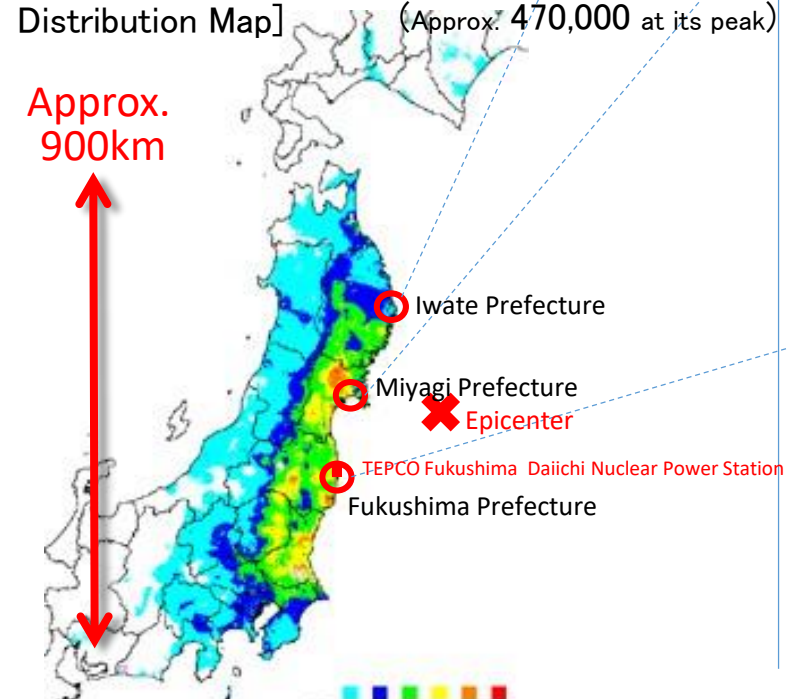


Reconstruction from the Great East Japan Earthquake and TEPCO Fukushima Daiichi Nuclear Power Station Accident

Feb 2019
Reconstruction Agency
Govt. of Japan

Damage	
[Time of occurrence] 14:46 on March 11, 2011	[No. of Human Casualties] Deceased 19,630 Missing 2,569 (As of 1 March 2018)
[Magnitude] 9.0 Maximum Seismic Intensity 7 (The largest earthquake ever recorded in Japan)	[No. of Buildings Completely Destroyed] 121,781 (As of 1 March 2018)
	[No. of Evacuation Centers] 2,417 (As of May 2011)
	[No. of Evacuees] 52,731 (As of 10 Jan 2019) (Approx. 470,000 at its peak)
[Seismic Intensity Distribution Map]	



Iwate Pref., Miyako City, City Hall

April 2011



Sept 2015



Miyagi Pref., Higashimatsushima City, Nobiru Railway Station

March 2011



May 2015



Fukushima Pref., Tomioka Town, Railway Station

March 2011



Feb 2019



Current Status and Measures for Reconstruction

Support to Evacuees

– Adjusting support to the needs arising along with the progress of reconstruction –

No. of Evacuees Approx. 470M (as of March 2011) → 53M (as of Jan 2018)

No. of Evacuees in Temporary Prefab Housing 4M (as of Dec 2018)

➡ Conducting continuous support along with the stages of rebuilding their daily lives, such as watching services, consultation and advice services, mental and health care services, helping community building.



Temporary Support Center
for Livelihood of Elderly People



Watching Services
by Counselors Helping
Livelihood

Reconstruct Housing and Town

– Rebuilding Houses is steadily progressing. To be completed by the end of March 2019 –

Relocating Housing Sites to Higher Lands 17M houses (as of end of Nov 2018)

〔 Planned No. of Houses Approx. 18M 〕

Public Housing for Disaster Affected People 29M houses (as of end of Nov 2018)

〔 Planned No. of Houses Approx. 30M 〕



Relocated Housing Site
(Miyako City, Iwate Pref)



Public Housing for
Disaster Affected People
(Ishinomaki City, Miyagi Pref)

Revive Industry and Work Places

– Production facilities almost recovered.

Assist promoting tourism, eliminating negative reputation, etc. –

Area of Land able to Restart Farming 89% (as of end of Jan 2018)

※ Ratio of above area among those farm land affected by tsunami

Marine Food Processing Facilities Restarting Operation 96%

(as of end of Jan 2018)

※ Ratio of above facilities among those wishing to restart operation in Iwate, Miyagi and Fukushima Pref.

No. of Approved Plans to Develop Central 10 plans (as of Nov 2018)

Commercial Facilities in Town

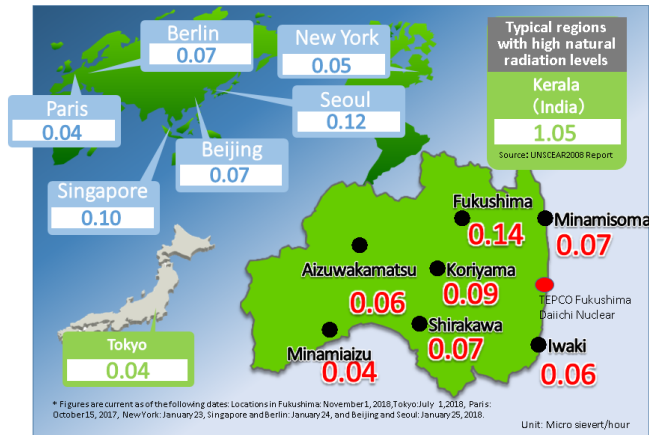


Abasse TAKATA
(Rikuzentakata City,
Iwate Pref)



Marine Food Processing Facility
(Kesenuma City, Miyagi Pref)

Reconstruction and Revitalization of Fukushima



1 Air Dose Rates within Fukushima

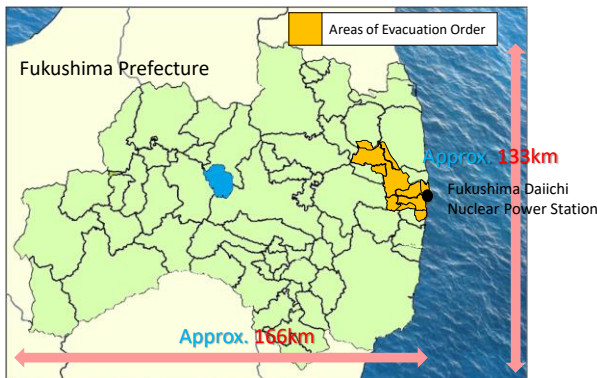
The air dose rates in Fukushima Pref. are about the same level as other major cities overseas.

2 Areas under Evacuation Order in Fukushima

Dimension of areas under evacuation order is about 2.7% of the whole pref. People in 97.3% of the pref. can live a normal life.

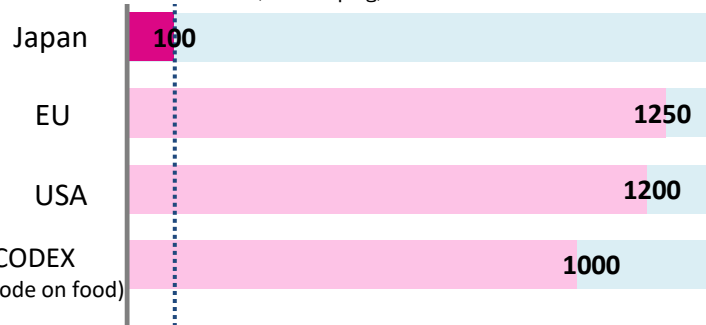
3 Standard Limits on Radioactive Substances in Foods

Inspection of radioactive substances is conducted based on the strictest level of standard limits in the world. Foods exceeding the standard limit are discarded.



Source: Created by the Reconstruction Agency based on materials from Fukushima Prefecture and the Support Team for Residents Affected by Nuclear Incidents

Standard Limits on Radioactive Substances in General Foods (Unit: Bq/kg)



Source: Created by the Reconstruction Agency based on "Basic Information on Radiation Risk"

Fukushima Innovation Coast Framework

Create new industries in Fukushima coastal area.

Decommissioning

Technology infrastructure for nuclear plant decommissioning bringing together expertise worldwide.

Robot/UAV (Unmanned Aerial Vehicle)

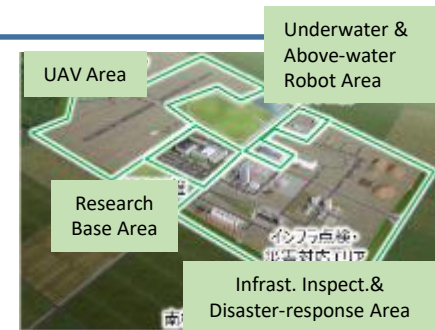
A new world-class research base for R&D, testing, performance evaluation of robots and UAVs.

Energy

The world's largest hydrogen production project using renewable energy will start in 2020. Fukushima-made hydrogen will be used in Tokyo 2020 Olympic and Paralympic Games.

Agriculture/Forestry/Fishery

Utilizing advanced technologies for the primary industries, such as GPS tractors, Remote-sensing drones, etc.



Fukushima Robot Test Field



Fukushima Hydrogen Energy Research Field

Reconstruction of TOHOKU and Tokyo 2020 Olympic and Paralympic Games

At the occasion of Tokyo 2020 Games, people's appreciation to the solidarity shown from the entire world since March 11, 2011 as well as today's TOHOKU, whose reconstruction resiliently moving forward with the full support nation-wide, are to be visualized.

⇒ With the concept of "Reconstruction Olympics", measures to focus on the three disaster-affected prefectures are planned.

1 Games in the three Disaster-Affected Prefectures

Baseball, Softball : 6 games at Fukushima Azuma Baseball

Stadium (Fukushima City, Fukushima Pref.)

Football: 10 games at Miyagi Stadium (Rifu Town, Miyagi Pref.)

2 Olympic Torch Relay

Three Days respectively in the three disaster-affected prefectures※.

(In other prefectures, two days respectively.) ※ Iwate, Miyagi and Fukushima Pref.
the Olympic Flame will be displayed in the three disaster-affected prefectures before the Relay.

Relay will start from Fukushima Pref.. The Flame will arrive at Matsushima Air Base
(SDF's air base affected by tsunami in 2011).

3 Host Town

34 municipalities in the three disaster-affected prefectures registered as the Host Town※

※ Municipalities' initiatives welcoming the visit of the athletes and people from overseas, support their matches and conduct people-to-people exchanges with the citizens.

4 Public Relations Activities on the three Disaster-Affected Prefectures

Woods of the three disaster-affected prefectures will be used at the Entrance Gate of the New National Stadium.

At Olympic villages and various receptions, foods from the three disaster-affected prefectures will be used and its specialties and touristic attractions will be advertised.



President of the IOC and PM Abe
at Fukushima Azuma Baseball
Stadium in Fukushima Pref
(24 Nov 2018)



Image of Fukushima Azuma Baseball
Stadium in Fukushima Pref.
after Repair Work



Miyagi Stadium in Miyagi Pref.